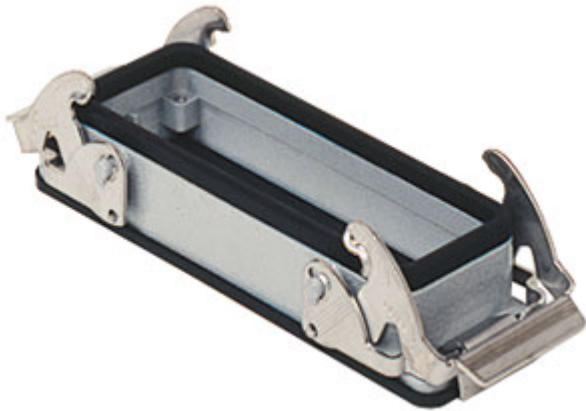


Part number



# C7I 16



## Brief description:

bulkhead mounting housings with 2 levers, size "77.27", metal version, IP66/ IP67

Product description	
Version	C7 - CV and M7 - MV enclosures, V-Type lever version
Series	Bulkhead mounting housings with 2 levers
Product type	with 2 stainless steel levers
Family	C7 - CV and M7 - MV enclosures, V-Type lever version
Size	size "77.27"
Technical data	
Material	metal
IP degree of protection	IP66/ IP67 (EN 60529) and IP69K (DIN 40050 - 9) degree of protection.
Further technical details	
Weight	158,00 g

Approvals / Standards	
Quality mark	 (type:4/4X/12),  , EAC
Conformity	CQC, CE
General ordering information	
EAN13 code	8015747093637
Tariff number	85369095
Packaging Information	
Packaging length	365,00 mm
Packaging height	195,00 mm
Packaging width	305,00 mm
Packaging weight	6,31 kg
Packaging volume	21,71 dm³
Packaging description	Carton box
Packaging quantity	40 Pcs
Packaging EAN code	8015747178136
Sub-packaging weight	0,79 kg
Sub-packaging description	Plastic packaging
Sub-packaging quantity	5 Pcs
Sub-packaging EAN barcode	8015747178143

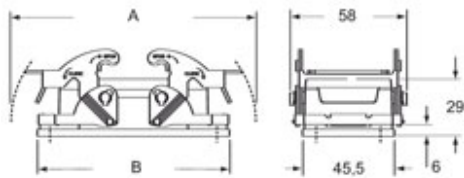
Part number

# C7I 16



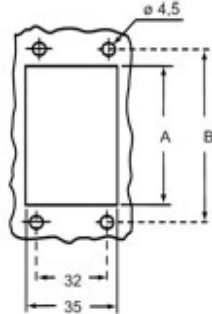
## Catalogue drawings

C7I



	A	B
C7I 10	122	95,5
C7I 16	142,5	115,5
C7I 24	169	142,5

## Catalogue drawings



	A	B
C7I 10	65	83
C7I 16	86	103
C7I 24	112	130

## Notes

C7I:

Due to the vertical closing movement, the new lever offers an IP66/IP67 protection (according to EN 60529) when fitted with a complete and coupled connector and used with ILME standard hoods in die cast aluminum with pegs (without adaptor).

For bulkhead-mounting housings, the IP66/IP67 protection class is guaranteed if the housings are fitted on sufficiently rigid panels, M4 screws of suitable length (negligible bending of the surface when exposed to the tightening torque of 0.8-1.2Nm of the fixing screws or to the deformations caused by the actual weight of the complete connector).

If rigidity is insufficient, is advisable to use CG .. FL flanges, M4 screws of suitable length and M4 flat/elastic washers (for the housing side) and M6 flat/elastic washers (for the flange side) with M4 locking nuts.

It is also important to check that the panel in contact with the gasket of the bulkhead-mounting housing flange is free from imperfections (deep scratches, grooves, burs) that could affect the operation of the gasket.